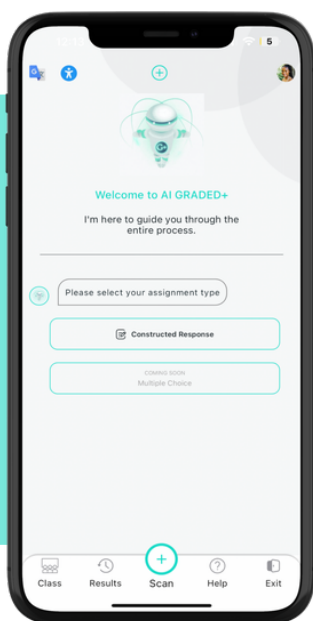




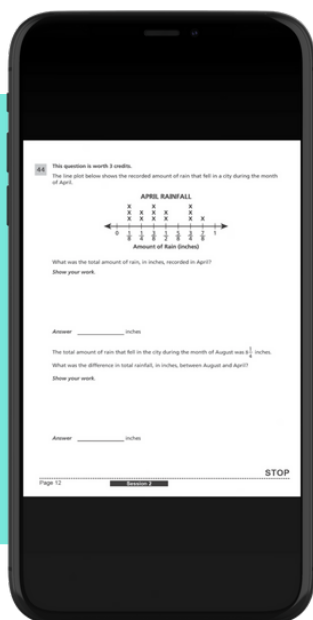
1



SET UP YOUR ASSIGNMENT

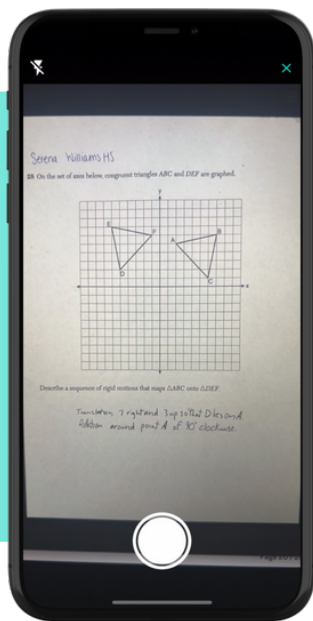
- Select your assignment type
- Select your grade level
- Select your subject (math)
- Select or search for the assignment standard
- Select which NYS scoring rubric you'd like to use
- Name your assignment
- Pick your Google Classroom

2



SCAN THE MATH PROBLEM SO THE GRADED+ CAN SOLVE IT AND CHECK THE ANSWER

3



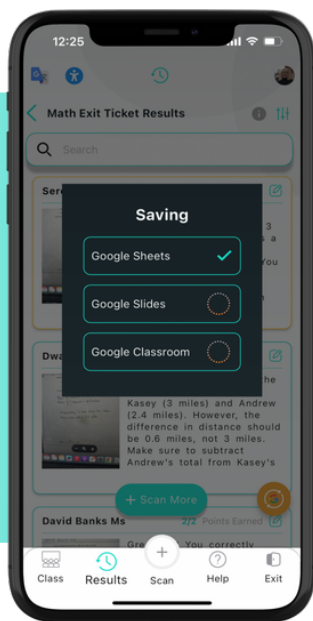
SCAN EACH STUDENT'S ASSIGNMENT

4



VIEW YOUR RESULTS IN THE RESULTS TAB OF THE APP

5



CLICK THE GOOGLE SYNC BUTTON TO SYNC TO YOUR GOOGLE CLASSROOM, SLIDES, AND SHEETS